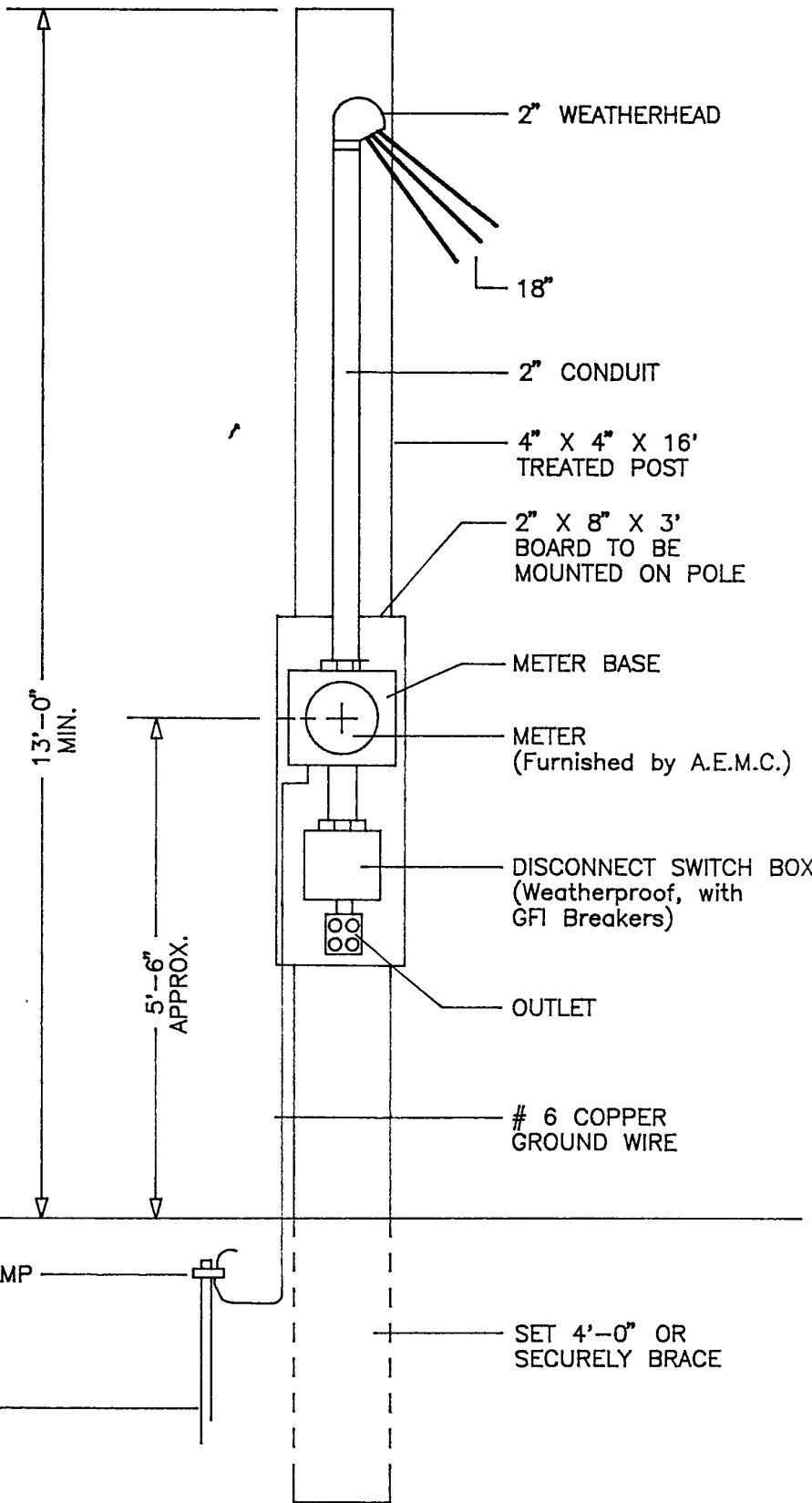


METER BASE
HOOK UP

NOTE: METER LOOPS CAN BE MOUNTED ON A POLE OR 4" X 4" X 16' TREATED POST FURNISHED BY CONSUMER.



2" WEATHERHEAD

18"

2" CONDUIT

4" X 4" X 16' TREATED POST

2" X 8" X 3' BOARD TO BE MOUNTED ON POLE

METER BASE

METER (Furnished by A.E.M.C.)

DISCONNECT SWITCH BOX (Weatherproof, with GFI Breakers)

OUTLET

6 COPPER GROUND WIRE

SET 4'-0" OR SECURELY BRACE

13'-0" MIN.

5'-6" APPROX.

GROUND LEVEL

GROUND ROD CLAMP

GROUND ROD 8'-0" X 5/8"

ALL MATERIAL SHOWN ON DRAWINGS TO BE FURNISHED BY CUSTOMER UNLESS OTHERWISE NOTED.

TEMP RIG INSTALLATION

REVISED: JAN. 26, 1995

DATE: JAN. 1995

AMICALOLA E.M.C.
JASPER, GA.

DRAWING NO.

DRAWN BY: MARVIN MOORE

APPROVED BY: LARRY YOUNG

SPEC7